

# CAMPUS NETWORKS, DATA CENTER SWITCHING

## Featuring Key Technologies:

- Unified Access
- Intelligent Fabric
- Network Analytics



### OmniSwitch® 10K



- Chassis based LAN switch for large campus networks and data center's core
- Chassis based LAN switch for large campus networks and data center's core
  - 8 Slot, up to 320 GigE, 256 10GigE, 48 40GigE ports
  - Redundant power, management and switch fabric
  - Front to back cooling, ISSU, Virtual Chassis technology
  - Advanced L3 routing: VRF, Multicast, IPv4 and IPv6
  - Automated VM movement
  - Automatic Fabric creation, SPB-M
  - Programmable: RESTful API, OpenFlow and OpenStack

### OmniSwitch® 6860/E



- Gigabit stackable LAN switch for campus network Unified Access and aggregation
- 24-port and 48-port models, four 10GigE SFP+ uplinks, GigE 1000BASE-T/SFP and PoE+ versions
  - Enhanced (E) models with co-CPU, 60 W PoE and EMP
  - Stacks up to 8 (up to 100m), optional backup power, front to back cooling
  - Advanced L3 routing: VRF, Multicast, IPv4 and IPv6
  - Access security and policy enforcement, SPB-M
  - Programmable: RESTful API, OpenFlow and OpenStack

### OmniSwitch® 9000E



- Chassis based LAN switch for large campus networks access and distribution
- 8 or 16 slots chassis, up to 384 GigE, 192 10GigE ports
  - Redundant power, management and switch fabric
  - Advanced L3 routing: VRF, Multicast, IPv4 and IPv6
  - Access security and policy enforcement
  - Multi Chassis LAG technology

### OmniSwitch® 6855



- Hardened Gigabit Ethernet LAN switch for industrial use and Metro access
- 10-port, 14-port and 24-port models, GigE 1000BASE-T/SFP and PoE versions
  - 24 SFP port model with SFP 10GigE uplinks; remote stacking up to 10km
  - Advanced L3 routing: IPv4 and IPv6, OpenFlow
  - Access security and policy enforcement
  - Metro Ethernet features

### OmniSwitch® 6900



- Core and distribution for campus networks, Top-of-Rack (ToR) for Data Center
- 20-port and 40-port 10 GigE 10GBASE-T/10GBase-X models with line card slots
  - 32-port QSFP+ 40 GigE/4x10 GigE and 72-port 10 GigE 10GBase-X models fixed
  - Up to 104 10 GigE, 56 10GBASE-T, 32 40 GigE, 24 x 2/4/8 Fiber Channel ports
  - Redundant power, front to back and back to front cooling
  - ISSU, Virtual Chassis technology
  - Advanced L3 routing: VRF, Multicast, IPv4 and IPv6
  - Universal Network Profiles; Orchestrated Policy based VM movement
  - Automatic Fabric creation, Virtual chassis, SPB-M, IP routing protocols
  - SDN programmability: RESTful API, Python, OpenFlow and OpenStack

### OmniSwitch® 6450 (model 24 and 48)



- Stackable Gigabit and Fast Ethernet LAN switch for campus network access and Metro access
- 24-port and 48-port models with two GigE or 10GigE uplinks, RJ45, SFP and PoE+ versions
  - Stacks up to 8 (up to 100m), optional backup power
  - Soft upgrades: GigE to 10GigE uplinks, Fast Ethernet to GigE access
  - Basic L3 routing: IPv4 and IPv6, OpenFlow
  - Access security and policy enforcement
  - Optional Metro Ethernet features license, as well as IEEE 1588 version

### OmniSwitch® 6450 (model 10)



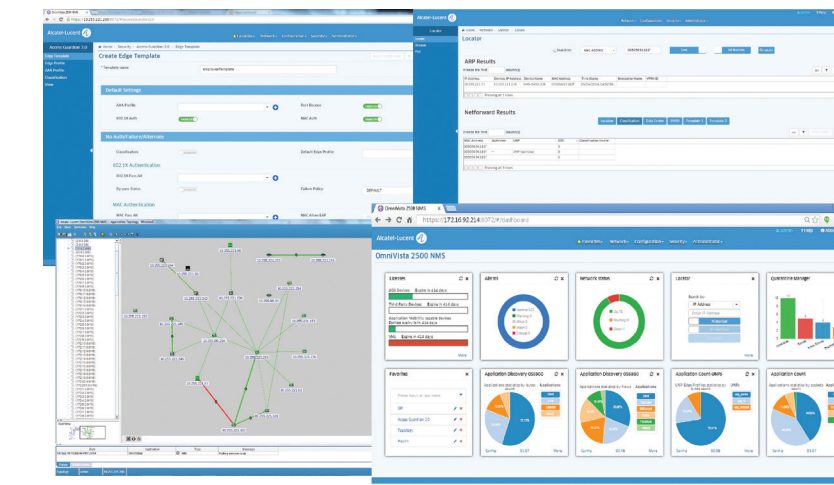
- Stackable Gigabit and Fast Ethernet LAN switch for small offices and Metro access
- 8-port models, with two GigE SFP uplinks, Fast Ethernet, GigE 1000BASE-T and PoE+ versions
  - Compact form factor, fanless, stacks up to 4
  - Soft upgrades: Fast Ethernet to GigE, Basic L3 routing: IPv4 and IPv6
  - Basic L3 routing: IPv4 and IPv6, OpenFlow
  - Access security and policy enforcement
  - Optional Metro Ethernet features license, as well as IEEE 1588 version

### OmniSwitch® 6250



- Stackable Fast Ethernet LAN switch for cost conscious deployments
- 24-port models with two GigE uplinks, RJ45 and PoE+ models
  - Compact form factor, stacks to 8, optional backup power
  - Basic L3 routing: IPv4 and IPv6, OpenFlow
  - Access security and policy enforcement
  - Optional Metro Ethernet features license

### OmniVista® 2500 NMS



#### Platform

- Standalone or virtual appliance version available
- Web 2.0, HTML5 access from any browser, including tablets
- User defined dashboard for custom based management
- Northbound RESTful API

#### General functions

- Graphical topology view with real-time status indication
- Resource management to back up of network element firmware and configurations

#### Unified Access management

- Unified user interface for wired and wireless access with dynamic unified role based policies
- Integrates with ClearPass for enhanced unified authentication, with consistent profile definition checking

#### Network Analytics

- Dashboard and Reporting Users, Ports, Switches, and Network health statistics
- Application distribution and Application usage statistics
- Customizable business reports generation
- Predictive Analysis for network planning
- Search and pinpoint device location and associated devices

#### Data Center management

- End-to-end physical and virtual networks infrastructure operations
- Interfaces with VMware vCenter® and Citrix™ XenServer® for discovery and inventory
- Real time tracking between VM and its network location
- VXLAN and VXLAN gateway configuration
- Quarantine management
- Threat mitigation through a secure perimeter against intrusion and malware attacks
- Remediation through various actions (Quarantine VLAN, port shut-down, blocking MAC addresses)

### Enterprise Services Router



Enterprise Services Router for any WAN connectivity including in vehicle communication

- OmniAccess 5710/5720 ESR, compact w/o moving parts
  - GigE and Fast Ethernet
  - WAN options: LTE, VDSL, SHDSL, E1/T1 SFP, V.35, X.21, V.24
- OmniAccess 5725 ESR, ruggedized
  - Fast Ethernet and 802.11a/b/g/n
  - WAN options: LTE, VDSL, GPS, X.21, V.24
- OmniAccess 5840/5850 ESR, modular
  - GigE and Fast Ethernet, optional PoE+, IEEE 802.11a/b/g/n
  - WAN options: VDSL2, ADSL2+, G.HDSL, Serial, BRI, SFP, E1/T1
  - Telephony FXS/FXO, E&M, optional GNU/Linux applications
- OmniAccess ESR WWAN enabler
  - Cellular G, 4G, LTE interface for any Services Router

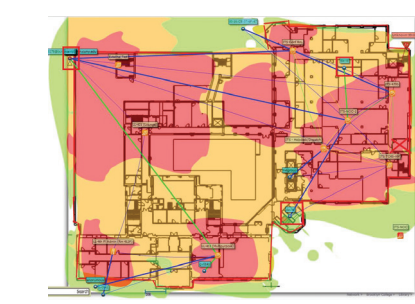
### ClearPass Policy Manager



Policy Management System for enterprises, schools, universities, hospitals, hotel and retail.

- Premium Policy Management for granular security
- Integrates with OmniVista 2500, enhances Unified Access
- Device on boarding and management
- Guest Access with advertisement
- Purpose-built appliance and virtual environment versions

### OmniVista® 3600 Air Manager (AM)



Designated management system for OmniAccess® WLAN deployments

- Wireless network management system
- Centralized visibility and control over wireless networks
- Real-time user and device monitoring
- Centralized configuration
- User, session and device monitoring
- Real-time location tracking information
- RF planning with VisualRF module

### OmniAccess® Instant Access Points



Comprehensive WiFi solution for small to medium locations

- Virtual WLAN control built in Access Points
- Supports 10's of local Wireless Access Points
- Integrated security with access control and role based access
- Client Match technology and adaptive RF management
- High capacity IEEE 802.11ac access points
- Cost effective IEEE 802.11n access points
- uPNP, DLNA, Airprint and Airplay support

### OmniAccess® WLAN Control and Access Points



Comprehensive WiFi solution for enterprise, education and hospitality

- Central WLAN control with one or more cooperating controllers
- Supports 1000's of
  - Local Wireless Access Points
  - Remote Wireless Access Points
  - Remote VPN users
- Integrated security with firewall, role based access
- Client Match technology and adaptive RF management
- High capacity IEEE 802.11ac access points
- Cost effective IEEE 802.11n access points
- Zero touch deployment remote access points
- uPNP, DLNA, Airprint and Airplay support

For detailed information, visit  
<http://enterprise.alcatel-lucent.com/>